



## DWL-1000AP Firmware Upgrade Procedure

1

### Before you Start

*It is recommended that this upgrade process be done through the Ethernet connection.*

### IMPORTANT

- The computer (client) must be within the same Subnet range as the Access Point or there is a chance that the program will lock up.
- If you are using a wireless computer, the (client) must be associated with the Access Point and have the same SSID.

2

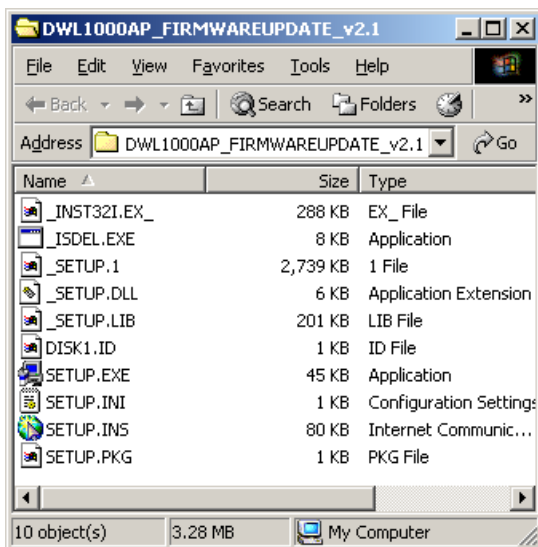
### Installing the Upgrade Software

Download

**DWL1000AP\_FIRMWAREUPDATE\_v2.1.zip** and extract its files from:

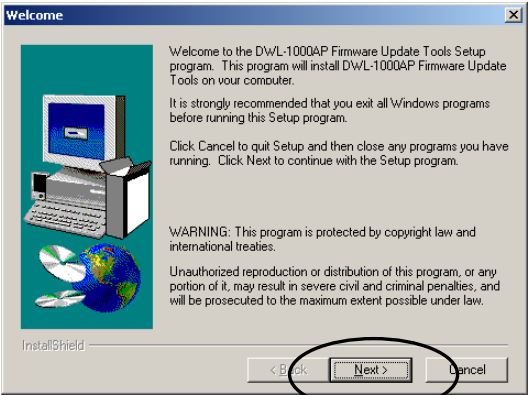
<http://support.dlink.com/products/view.asp?productid=DWL-1000AP>

**Double Click on Setup.exe**

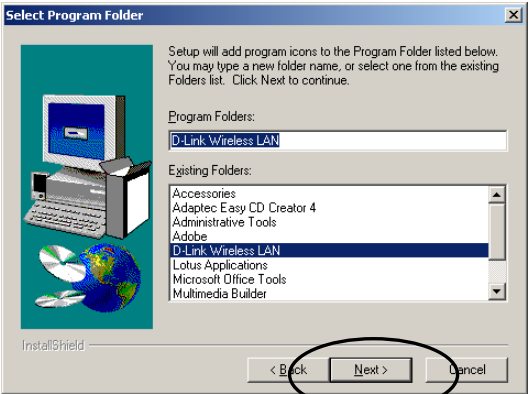


# Installing the Upgrade Software (continued)

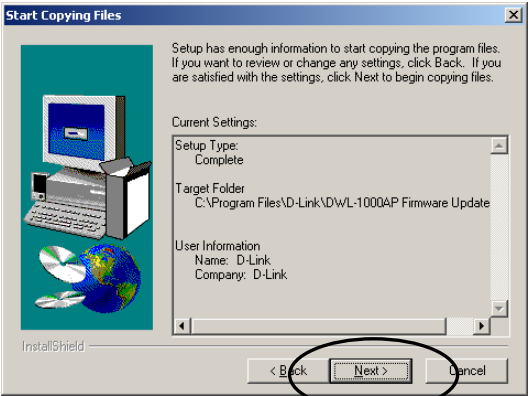
Click Next



Click Next



Click Next  
and allow the program to finish.



# 3

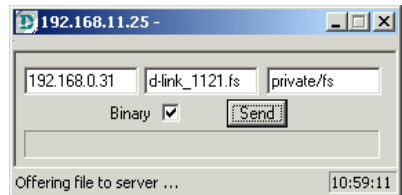
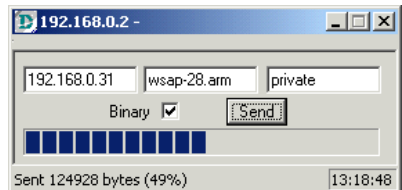
## Upgrading the DWL-1000AP

Once the software has installed, go to **Start > Programs > D-Link Wireless LAN > Upgrade**

**Click Upgrade**



During the upgrade you will see these screens.



Once the upgrade is complete, this screen will show.

**Click Exit**



**D-Link®**  
Building Networks for People